

Greenways in Girona, diferents uses and increase of quality of life

CONSORCI VIES VERDES DE GIRONA
- Consortium of Girona Greenways -

by **Emili Mató,**
manager

Velo-city 2007

Munich



Between the Pyrenees and the Costa Brava

115 km. of accessible greenway

- Iron and Coal Route: Ripoll- Sant Joan de les Abadesses-Ogassa (15 km)
- Narrow-Gauge Railway Route: Olot – Girona (60 km)
- Narrow-Gauge Railway Route : Girona – Sant Feliu de Guíxols (40 km)



Greenways, a communication axis with several uses

- Health
- Sport
- Leisure
- Daily mobility
- Tourism
- Accessibility
- Environmental education -
Familiarity with the territory



A great tourist potential



- Increasing demand of tourism with sustainable proposals.
- As an ecological tourism, allow people to discover the countryside at their own rhythm, enjoying every detail.
- Constitute an excellent way to enjoy a great variety of landscapes, natural surroundings and towns with a rich historical heritage and diversified natural patrimony.
- It breaks with the “summer demand”.
- Complete supply of services, and results in a local economic development (varied tourist services: accommodation, rent of material, gastronomy, activities, etc.)

Alternative for daily mobility

- Solution for short and habitual displacements: purchases in the neighboring town, goings to the work, the school, the near orchard...
- The bicycle wins in short distances.
- Combination with the public transport: agreement with TEISA, company of bus transports.
- Nonpolluting, suitable to mental and physical health.



Physical exercise, a benefit for the health



- Benefits to use the bicycle daily (or often):
 1. Improvement of the sanguineous circulation
 2. Diminishes arterial pressure
 3. Increases the pulmonary capacity
 4. Increases the calcium of the bones
 5. Psychological benefits
 6. Reinforces the joints
 7. It improves the muscular tone
 8. It also balances our weight
- Also walking, as sanitary authorities recommend: 30 minutes daily.

An escape route

- Break the daily routine having a walk on foot or in bicycle, change the rate of life in healthful natural surroundings allows to relax body and mind
- Girona greenways are considered as sport infrastructures by the main directorate of Sport in Catalonia. Several sportsman have used them for training (as Lance Armstrong).
- The accessibility and the security facilitate the use to children and old people.



Accessible to everyone



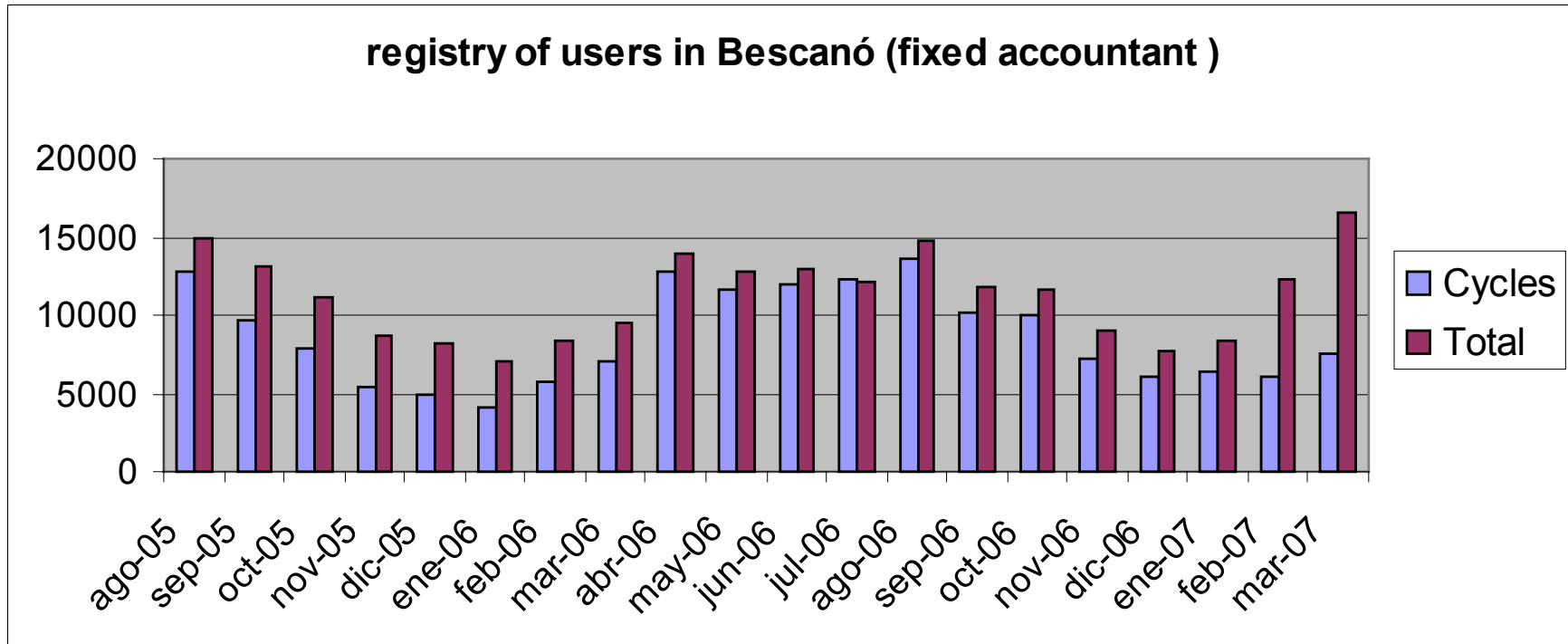
- Without motorized traffic and with smooth slopes (less than 3%).
- For users of 0 to 99 years.
- Accessible and safe for people with reduced mobility, including for users in wheelchair.
- Adapted Bicycles in 4 points of the route, available in rent, for handicapped persons or with reduced mobility.

Systems of count of users



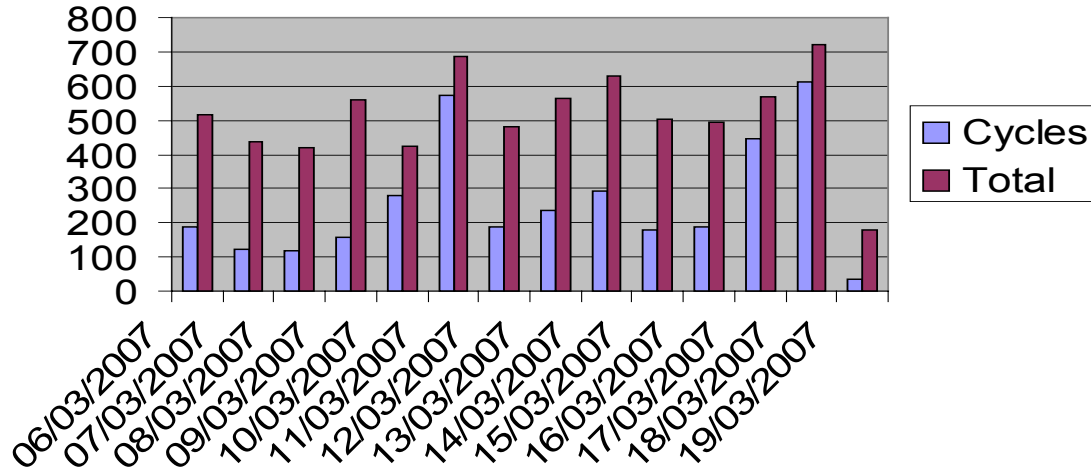
- Observation in different points of the greenway.
- Fixed accountant in Bescanó, 2 apparatuses (count bicycles and total)
- New fixed accountant in Sant Joan de les Abadesses (marks the sense of the route of cycles)
- Mobile accountant.
- **Year 2006: 800.000 uses**
- Accomplishment of a **survey** between users, in collaboration with the University of Girona, department of Tourism, and the group "Mou-te en bici". Oct 2005 - Set 06

Results of the accountants

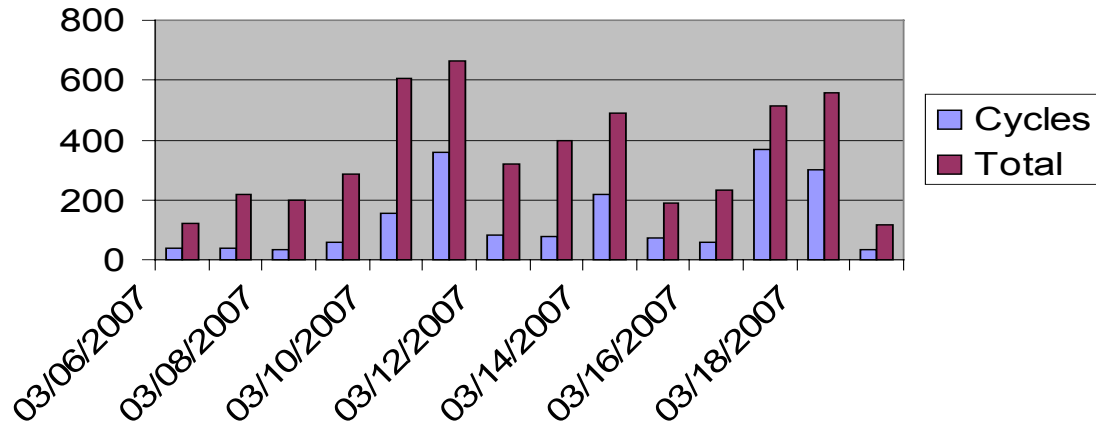


Results of the accountants

Daily evolution - users in Bescanó

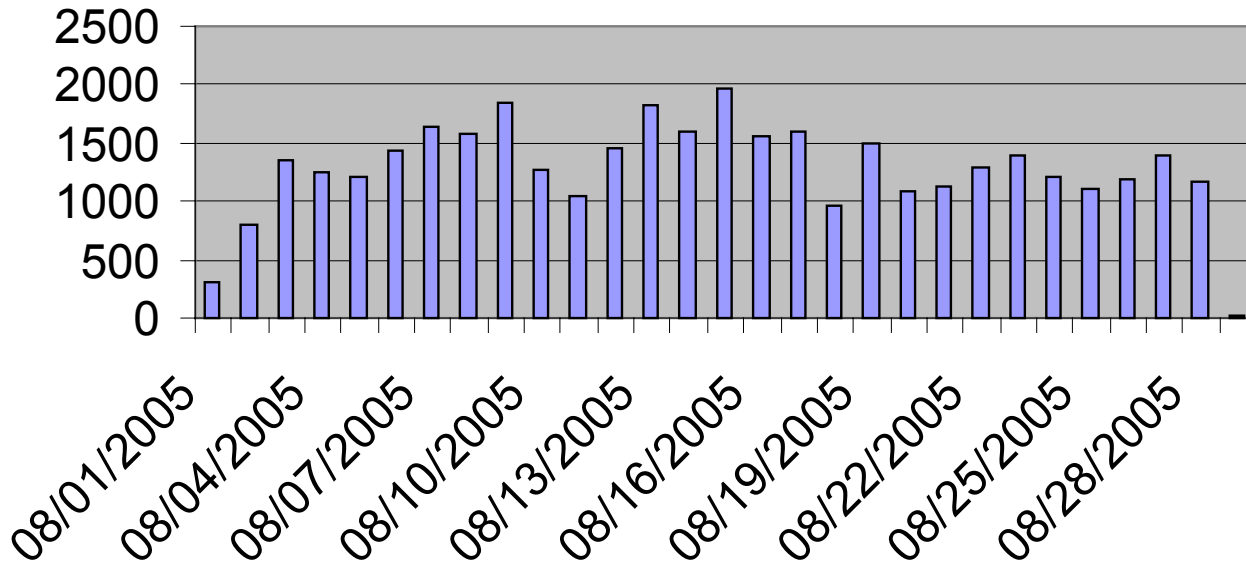


Daily evolution - users in Sant Joan de les Abadesses (fixed accountant)



Results of the accountants

Daily evolution - august 05 in Castell-Platja d'Aro (mobile accountant)



Survey 2005 - 2006

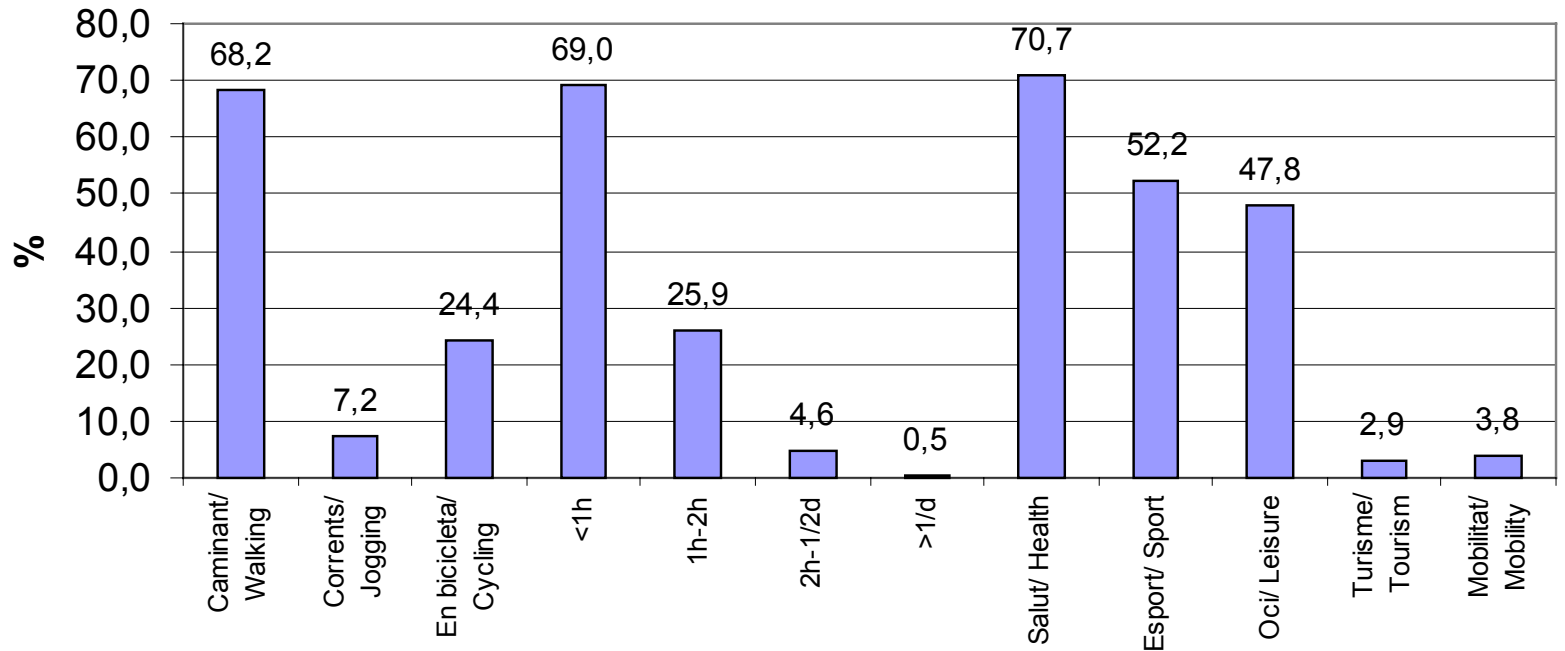
Study method

- Study to evaluate the different uses of Girona greenways, the mode, duration, reasons of use, the satisfaction of the users with services and the economic impact on the population.
- 1261 surveys made in the route (in Catalan, Spanish, English, French and German, in 12 different places).
- considering: for month, hour strip, day (workable or weekend)
- a user every 15 minutes
- double in summer
- profile of user type: person who makes short routes, for health motivation, leisure or sport, and living close-by. Also cycletourist who makes long distances.



First results

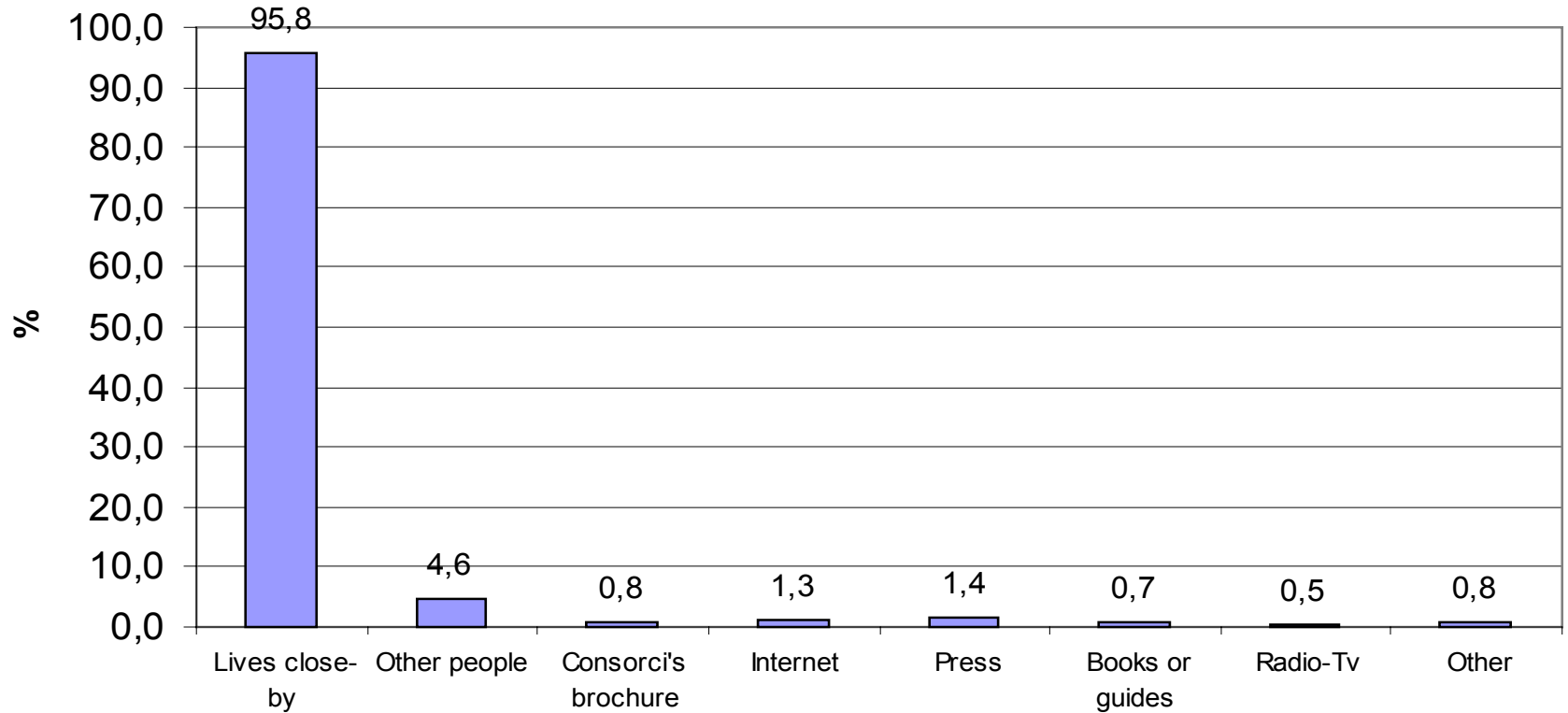
Mode, duration and reasons of use



Greenways have several and combined uses: A 40% mention 1 single reason for use; another 40%, 2 reasons and 18 % give 3 reasons.

First results

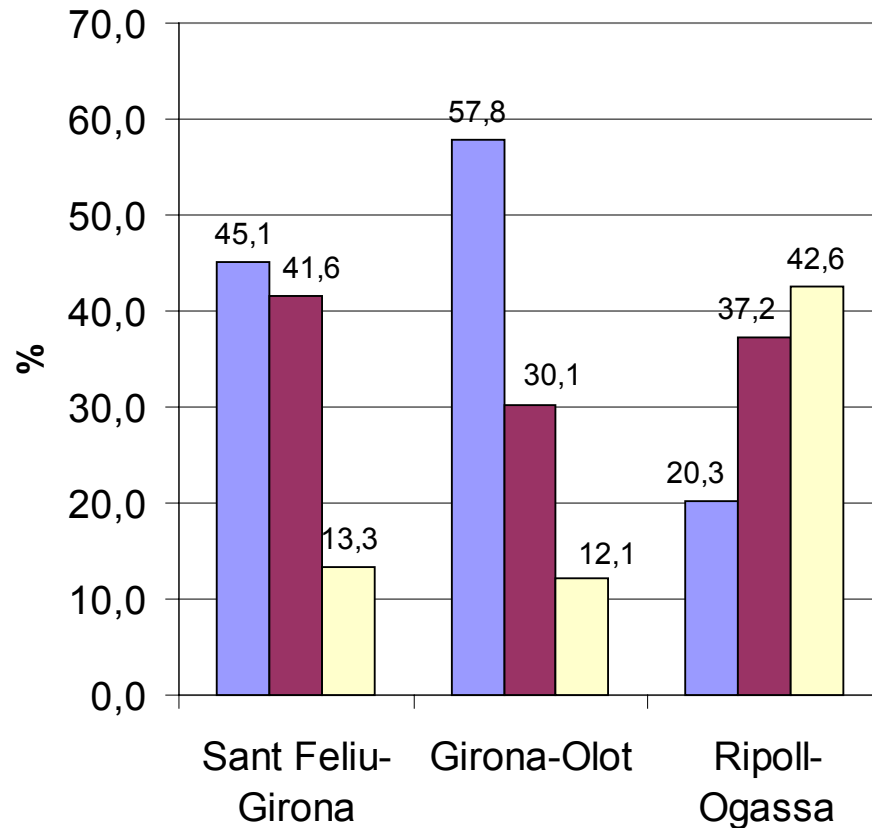
How got to know the route



96 % - 1 way of information; 2.5 % - 2 ways

First results

Route knowledge



Whole range

Up to 1 hour: 69 %

1 to 2 hours: 26%

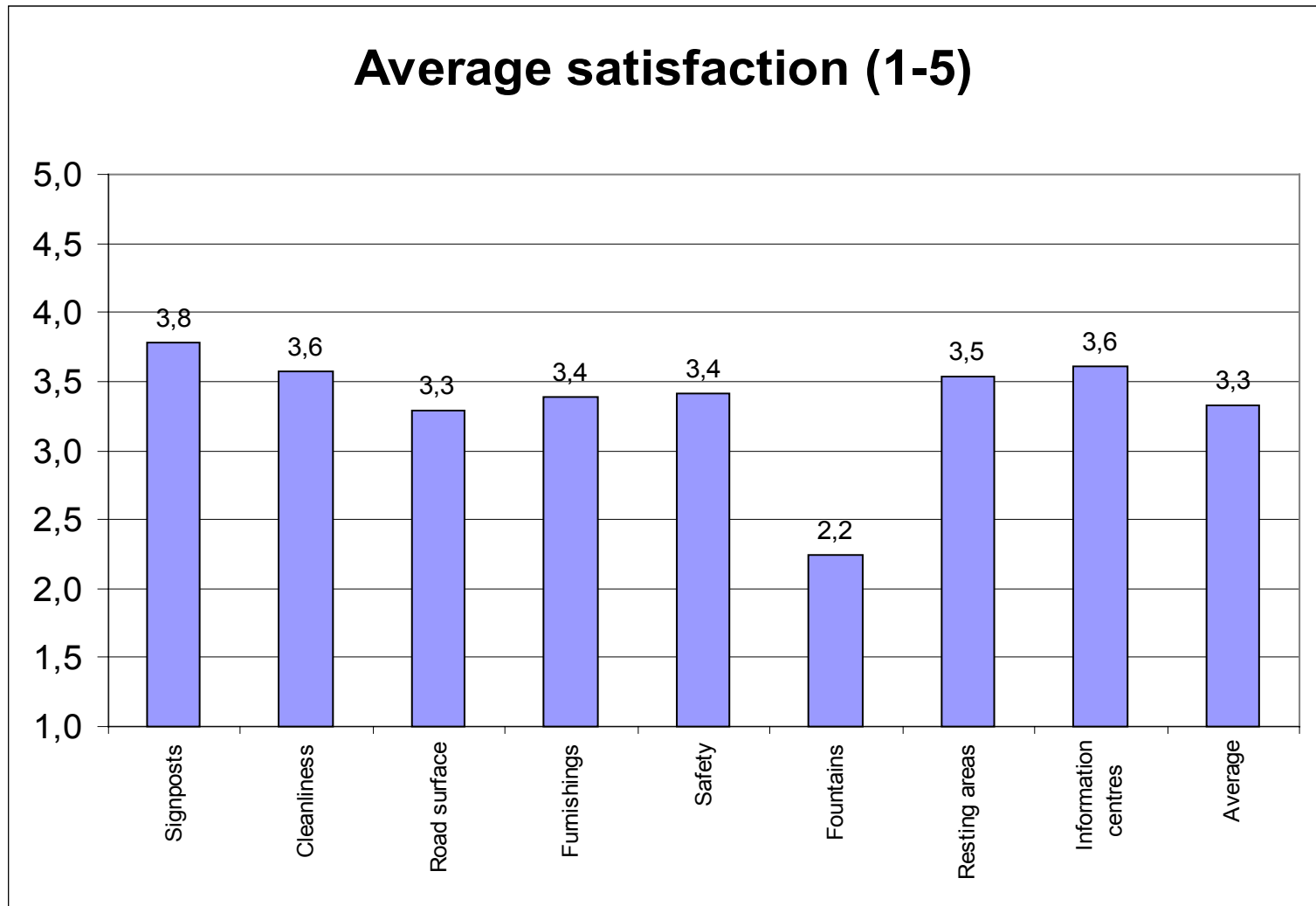
2 h to noon: 4,5%

Used

Never used but knew about

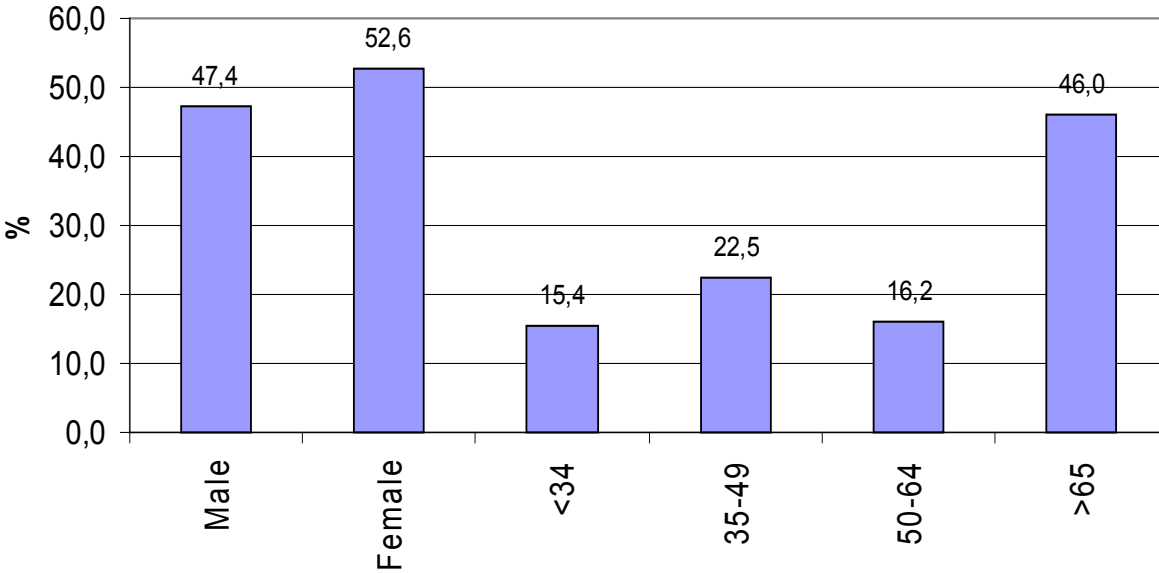
Does not know about

First results



Favourite pavement: soft pavement 83% ; hard pavement 16,8 %

Gender and age



Number of companions

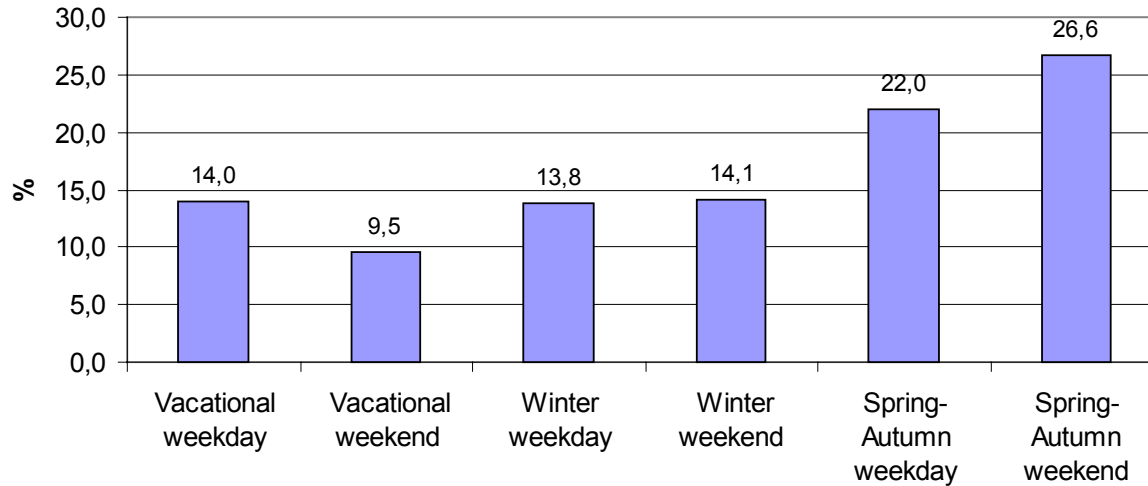
0 - 43,8 %

1 - 41 %

2 - 10,4

3, 3,1 %

Date of interview



Economic impact

Services	Restaurant	Bar	Accomodation	Renting ccyles	Transport
% use	1,0	6,5	0,3	0,1	0,9
euros spended	17,3	3,7	33,8	16,9	5,3
Average satisfaction (1-5)	3,9	4	3,9	3,3	2,7

ECONOMIC IMPACT	FOR 500.000 USES	FOR 800.000 USES
RESTAURANT	86.500	138.400
BAR	120.250	192.400
ACCOMODATION	50.700	81.120
RENTAL CYCLES	8.450	13.520
TRANSPORT	23.850	38.160
TOTAL	289.750 EUROS	463.600 EUROS

www.gironagreenways.org

Consorci de les Vies Verdes de Girona

Pujada Sant Martí, 4-5
17004 GIRONA (Spain)
+ 00 34 972 185 199
info@viesverdes.org



www.gironagreenways.org

Photographs: CVVGI.